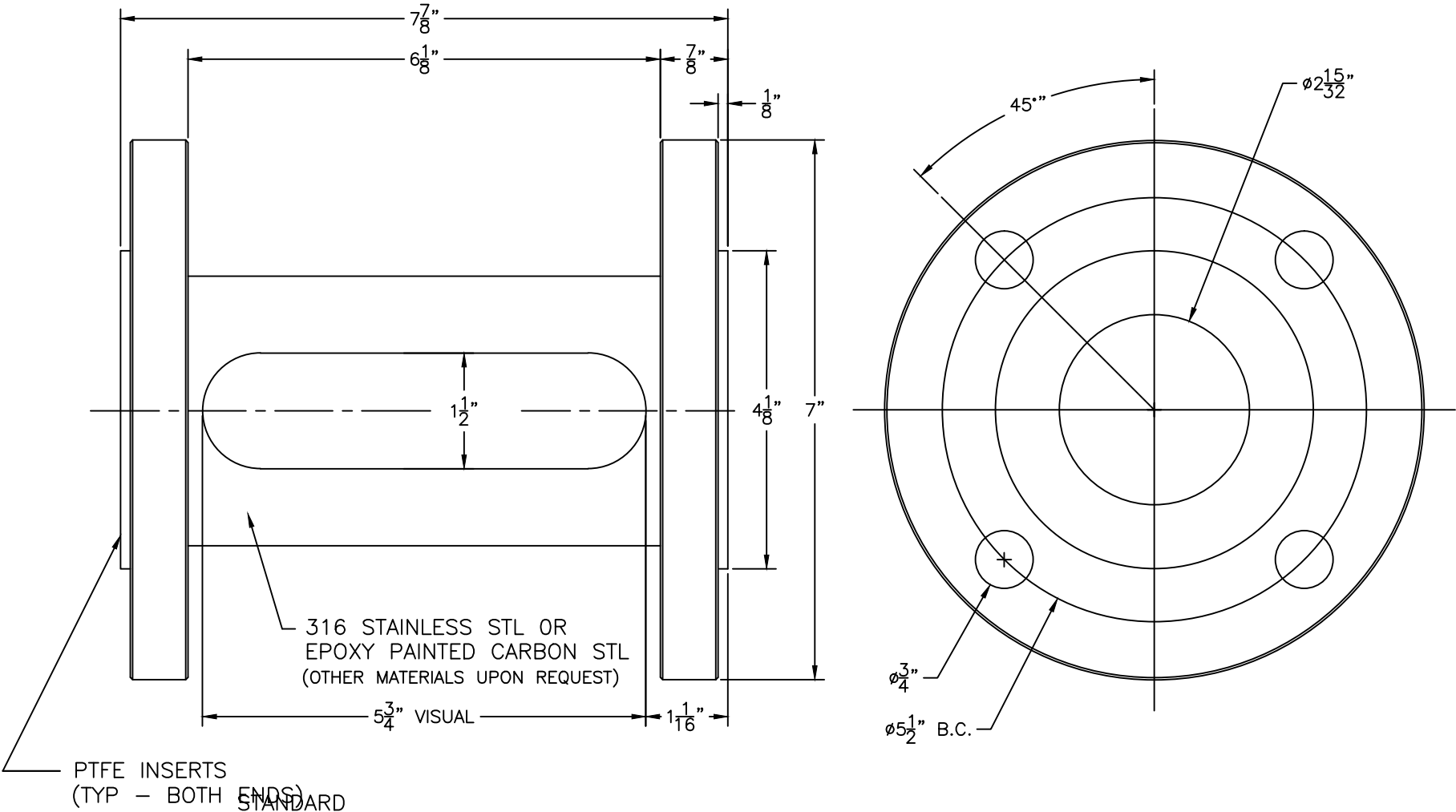


MODEL 2-1/2" LIG



UNLESS OTHERWISE NOTED: DIMENSIONS ARE IN INCHES DIMENSIONS SYMMETRICAL ABOUT CENTERLINES. BREAK CORNERS. REMOVE BURRS. CASTING FILLET RADIUS: 1/8". CAST CORNER RADIUS: 1/16".				MACHINING TOLERANCES: FRACTIONS ± 1/64 DECIMALS ± .010 ANGLES ± 1/2° FILLET RADIUS: 1/32 R. MACHINED FINISH, Ra: 125µ IN. 0.4µ IN. WITHIN 1/64 FIN				PAPAILIAS 245 PEGASUS AVENUE, NORTHVALE, NJ 07647			
								2-1/2" LIG ARMORED SIGHTFLOW INDICATOR			
THIS DRAWING IS THE SOLE PROPERTY OF THE J.G. PAPAILIAS COMPANY, INC. AND NEITHER THE DOCUMENT NOR THE INFORMATION CONTAINED HEREIN SHALL BE COPIED, REPRODUCED, DISCLOSED OR TRANSFERRED, EXCEPT AS AUTHORIZED IN WRITING.				DRAWN	RPS	04/07/05	SIZE	CAGE CODE	DRAWING NO.	REV.	
				CHECKED			B	1Z740	2.5LIGGA	0	
				APPROVED			SCALE: 1 : 1	WT:		SHEET 1 OF 1	

O-RING SEALS [NOT SHOWN]
STANDARD: BUNA-N, EPDM,
FLUROELASTOMER [FKM]

ADD'L: FEP ENCAPSULATED SILICONE & AFLAS
FOR KALREZ - CALL FACTORY